

FOR LEASE

OFFICE WAREHOUSE

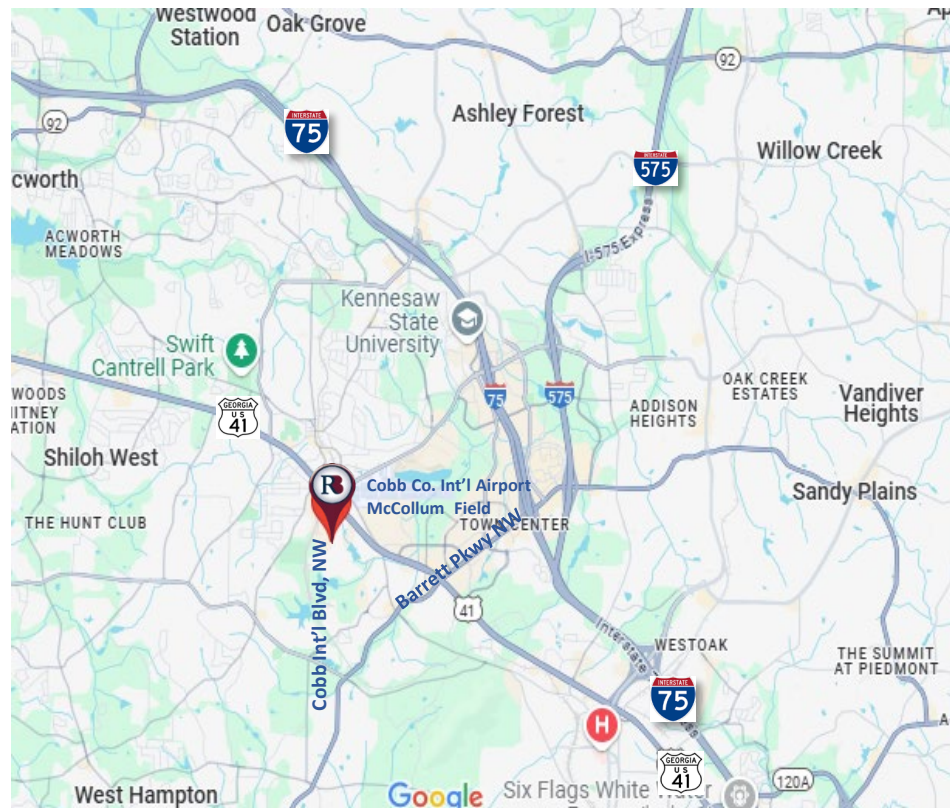
±14,805 SF

2825 Cobb International Blvd
Suite 110
Kennesaw, GA 30152



PROPERTY HIGHLIGHTS

- ✓ ±14,805 Total SF
- ✓ ±11,760 SF Warehouse
- ✓ ± 3,225 SF Office
- ✓ Very Competitive Rent Structure
- ✓ Drive-In Door/ 5 Dock Doors
- ✓ 20 - 22' Clear Ceiling Height
- ✓ Excellent Access to Cobb County Int'l Airport McCollum Field, Hwy 41, I-75 & I-575



The information contained herein has been received from sources deemed reliable, but no liability is assumed by Richard Bowers & Co. or its agents for errors or omissions.



Richard Bowers & Co.
260 Peachtree Street | Suite 2400
Atlanta, GA 30303
(404) 816-1600
www.richardbowers.com



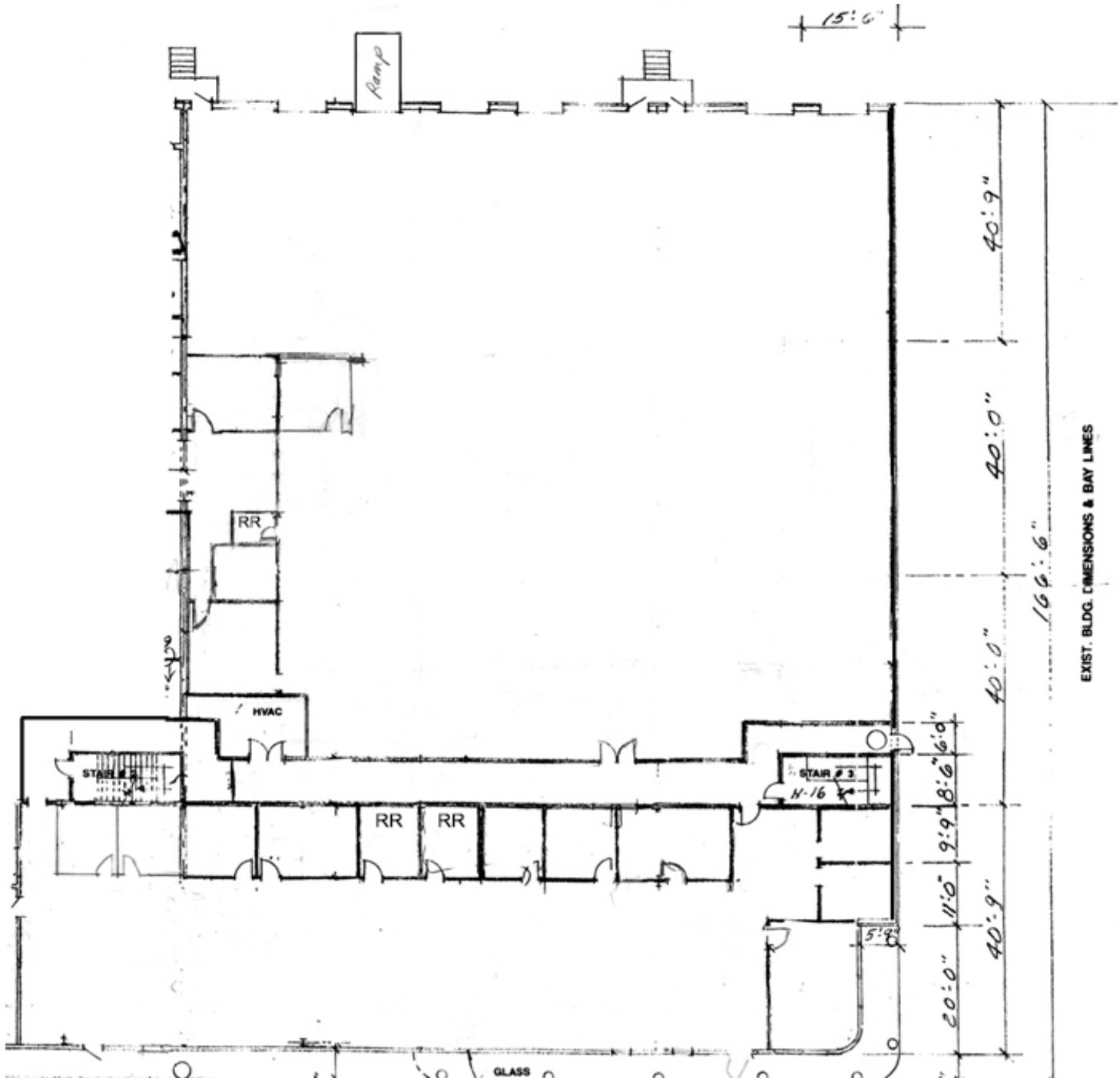
For More Information contact:

Randy Hoye, SVP
(404) 816-1600, ext. 111
rhoye@richardbowers.com

FOR LEASE
OFFICE WAREHOUSE
14,805 SF

2825 Cobb International Blvd
Suite 110
Kennesaw, GA 30152

Floor Plan
Suite 110- 14,805 SF



The information contained herein has been received from sources deemed reliable, but no liability is assumed by Richard Bowers & Co. or its agents for errors or omissions.



Richard Bowers & Co.
260 Peachtree Street | Suite 2400
Atlanta, GA 30303
(404) 816-1600
www.richardbowers.com



For More Information contact:

Randy Hoye, SVP
(404) 816-1600, ext. 111
rhoye@richardbowers.com