

# SUBLEASE

## FREE STANDING INDUSTRIAL BLDG

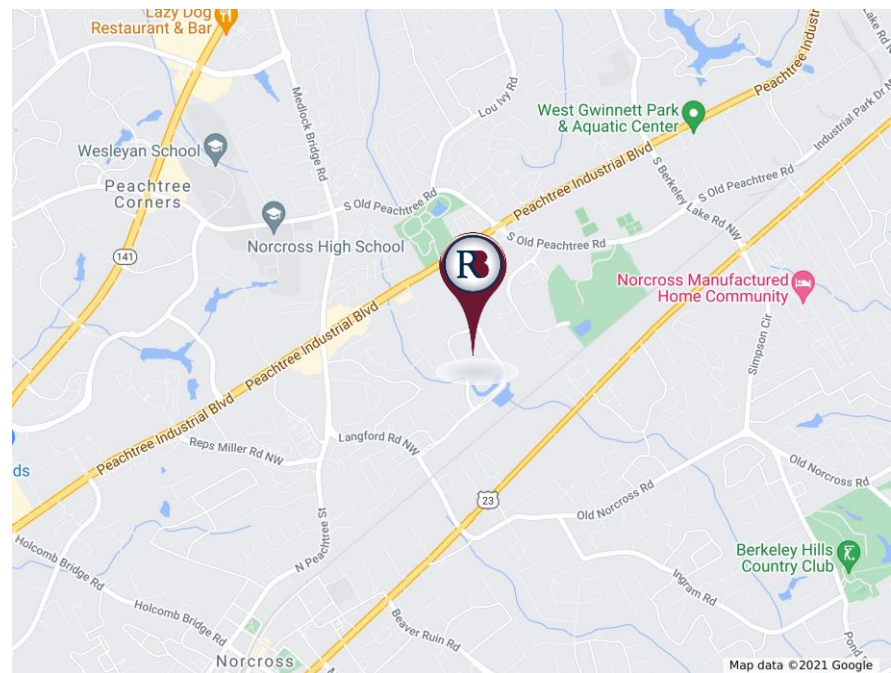
Building Size: 31,946 RSF

3055 Northwoods Circle, NE  
Norcross, GA 30071



### PROPERTY HIGHLIGHTS

- ✓ Peachtree Corners Industrial Sublease
- ✓ Total SF Available: 31,946 RSF
- ✓ Office SF: 11,600 SF
- ✓ Warehouse SF: 20,346 SF
- ✓ Year Built: 1985
- ✓ Dock Hi Doors: 8
- ✓ Ceiling Height: 18' Warehouse Clear Height
- ✓ Lighting: T-5
- ✓ Power: 1,200 Amps at 120/208 Volts
- ✓ 1,200 Amps at 277/480 Volts
- ✓ Site Size: 2.13 Acres
- ✓ Lease Expiration: October 31, 2025
- ✓ Approximately 61 Surface Parking Spaces
- ✓ Sublease Rate: Withheld
- ✓ Park Setting
- ✓ Access to I-85, 2.5 Miles N of Peachtree Ind. Blvd/Hwy 141 Split
- ✓ 33 Miles from Atlanta Hartsfield- Jackson International Airport



**Richard Bowers & Co.**  
260 Peachtree Street | Suite 2400  
Atlanta, GA 30303  
(404) 816-1600  
www.richardbowers.com



For More Information contact:

**Nancy Sellers**  
(404) 816-1600, ext. 151  
nsellers@richardbowers.com

# SUBLEASE

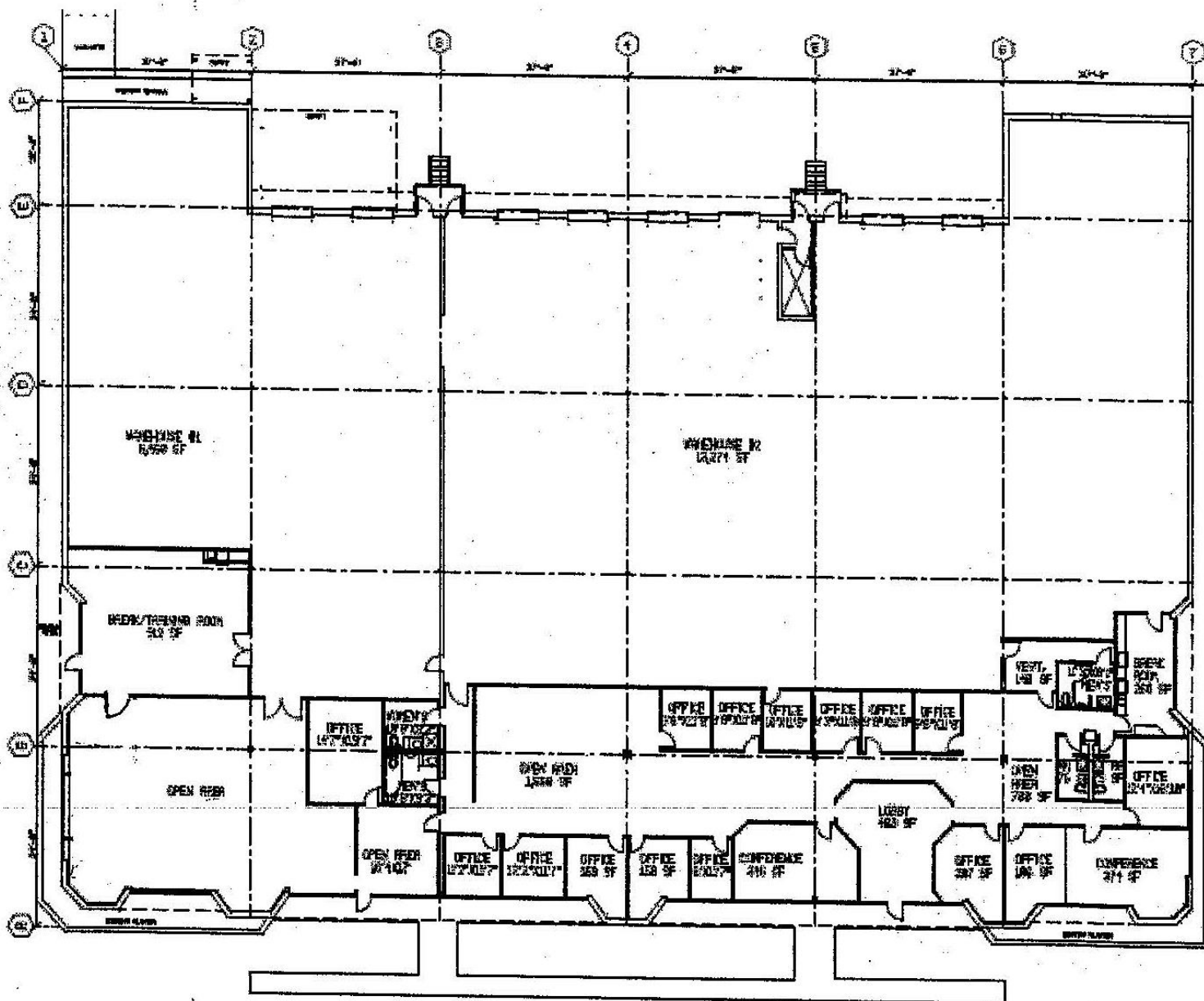
## FREE STANDING INDUSTRIAL BLDG

Building Size: 31,946 RSF

# 3055 Northwoods Circle, NE

Norcross, GA 30071

## Floor Plan- 31,946 SF



**Richard Bowers & Co.**  
260 Peachtree Street | Suite 2400  
Atlanta, GA 30303  
(404) 816-1600  
www.richardbowers.com



For More Information contact:

**Nancy Sellers**  
(404) 816-1600, ext. 151  
nsellers@richardbowers.com