

# FOR LEASE

Retail Suite C-105

± 1,430 SF

## Marsh Creek Village Shopping Center

6780 Roswell Road, Suite C-105

Atlanta, GA 30328

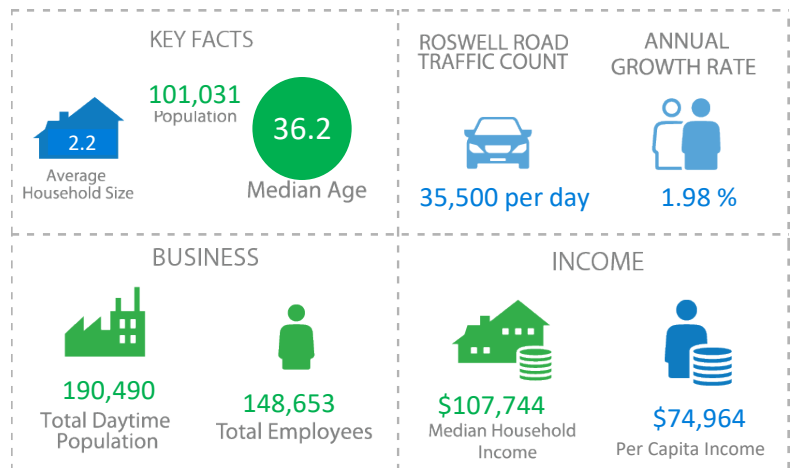
Available November 1, 2024



### Property Highlights

- Marsh Creek Village Shopping Center
- Building "C" (downstairs) ± 1,430 SF
- Suite C-105 (\$28 PSF + \$7.50 NNNs)  
**Available November 1, 2024**
- Great location in Sandy Springs with strong visibility and over 600 feet of frontage on Roswell Road
- Buildings built in 2010, Easy Ingress/Egress
- Over 30,000 cars per day pass by on Roswell Road
- **HURRY! ONLY ONE SPACE AVAILABLE!**

The information contained herein has been received from sources considered reliable, but no liability is assumed by Richard Bowers & Co. or its Agents for errors and omissions.



Richard Bowers & Co.  
260 Peachtree Street | Suite 2400  
Atlanta, GA 30303  
(404) 816-1600  
www.richardbowers.com



For More Information contact

Exclusive Agent:

Jeff McMullen  
(770) 380-6538 - Mobile  
(jmcullen@richardbowers.com)

# FOR LEASE

Retail Suite C-105

± 1,430 SF

## Marsh Creek Village Shopping Center

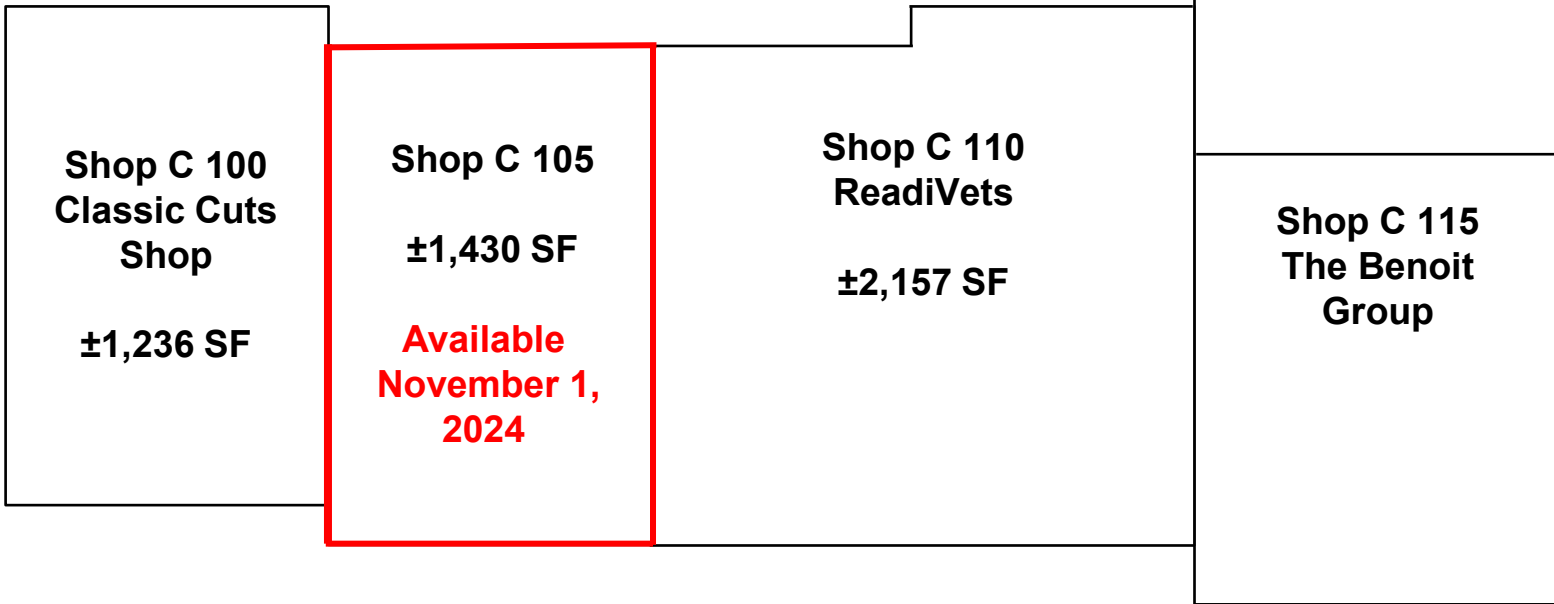
6780 Roswell Road, Suite C-105

Atlanta, GA 30328

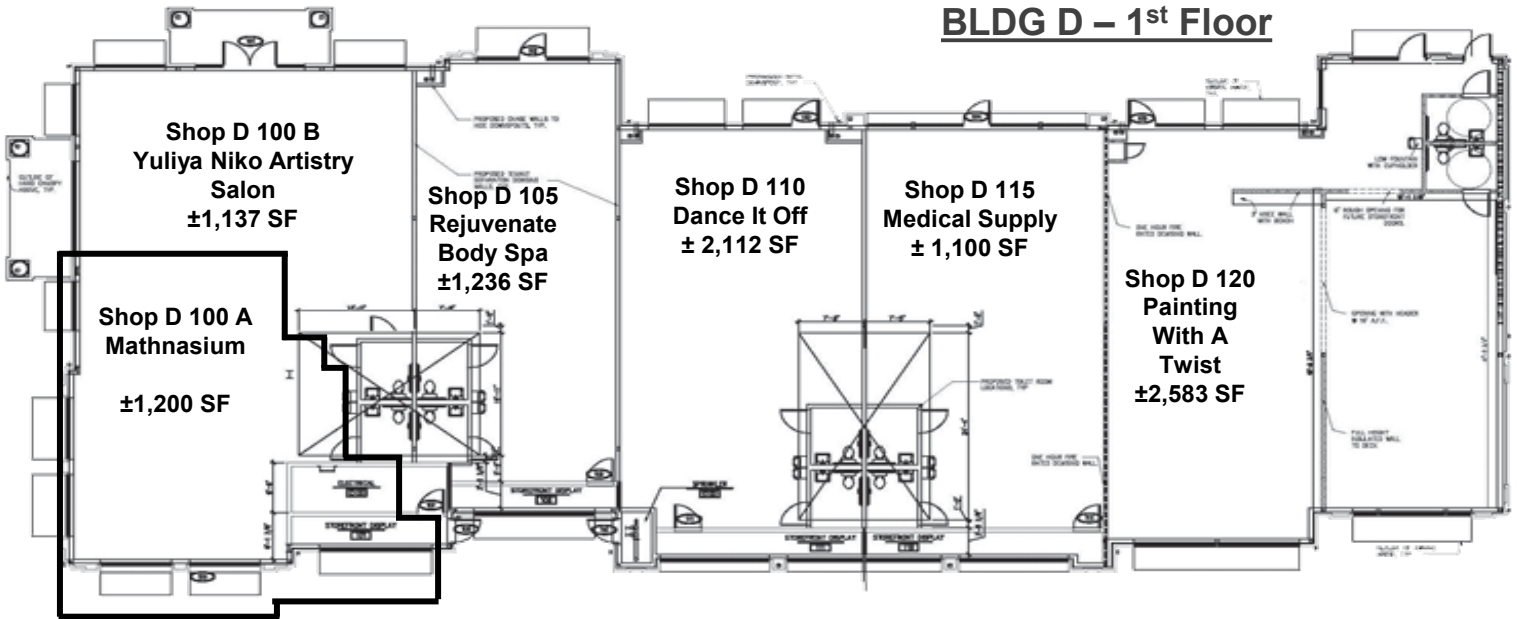
Available November 1, 2024

### SITE PLANS

#### BLDG C – 1<sup>st</sup> Floor



#### BLDG D – 1<sup>st</sup> Floor



The information contained herein has been received from sources considered reliable, but no liability is assumed by Richard Bowers & Co. or its Agents for errors and omissions.



**Richard Bowers & Co.**  
260 Peachtree Street | Suite 2400  
Atlanta, GA 30303  
(404) 816-1600  
www.richardbowers.com



For More Information contact:

Exclusive Agent:

**Jeff McMullen**  
(770) 380-6538 - Mobile  
jmcullen@richardbowers.com

# FOR LEASE

Retail Suite C-105

± 1,430 SF

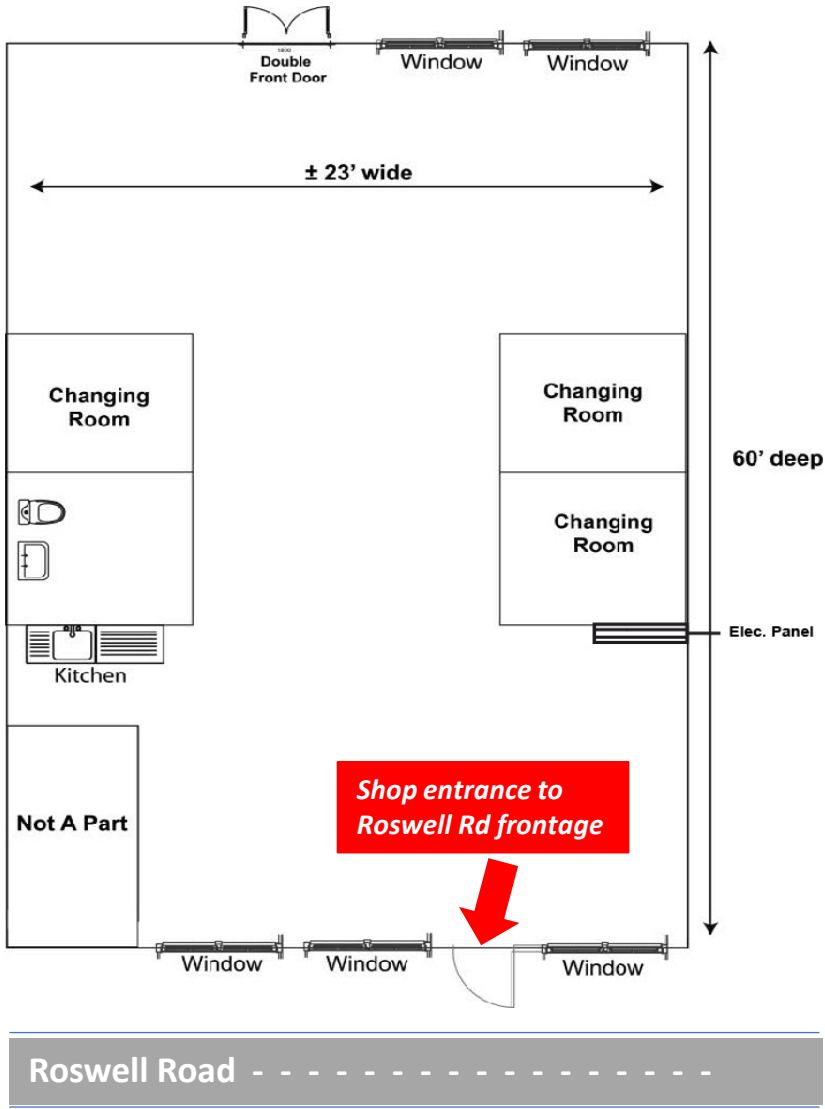
## Marsh Creek Village Shopping Center

6780 Roswell Road, Suite C-105

Atlanta, GA 30328

Available November 1, 2024

### BUILDING C- SUITE 105



The information contained herein has been received from sources considered reliable, but no liability is assumed by Richard Bowers & Co. or its Agents for errors and omissions.

**Richard Bowers & Co.**  
260 Peachtree Street | Suite 2400  
Atlanta, GA 30303  
(404) 816-1600  
www.richardbowers.com



For More Information contact:

Exclusive Agent:

**Jeff McMullen**  
(770) 380-6538 - Mobile  
jmcullen@richardbowers.com