

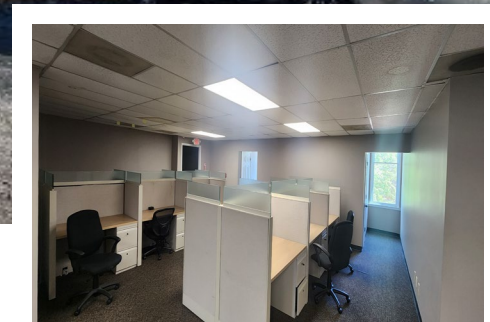
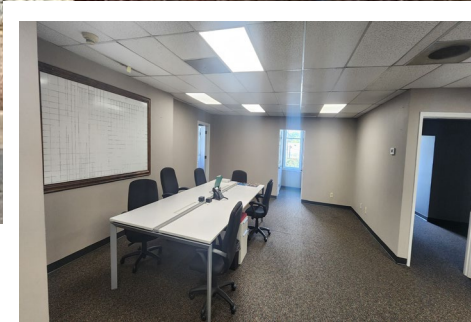
# OFFICE FOR LEASE

2<sup>ND</sup> Floor

±2,500 SF

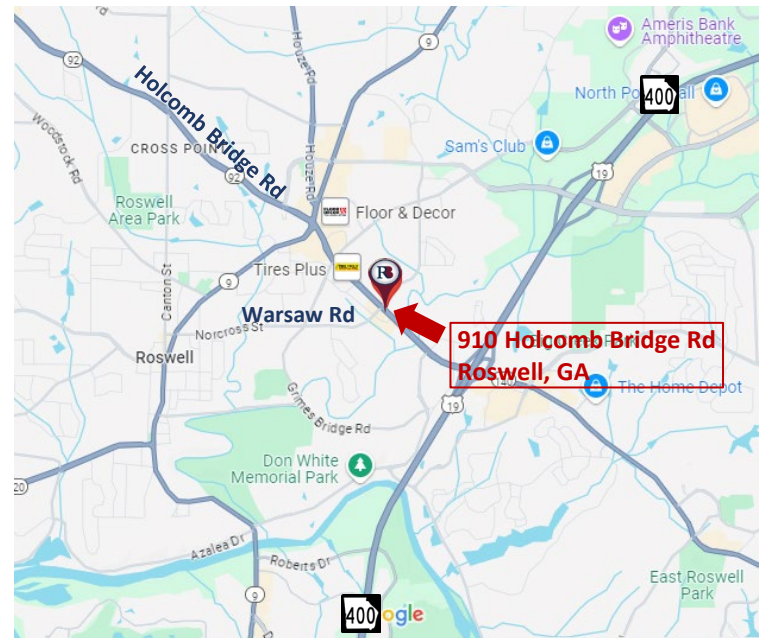
# 910 Holcomb Road

Roswell, GA 30076



## PROPERTY HIGHLIGHTS

- ✓ Approx. 2,500 SF Office Space
- ✓ **Available Now!** Move-in Ready
- ✓ Rate: \$16.00 PSF
- ✓ 2-story Brick Building, **Elevator Served**
- ✓ Break Room & Some Furniture Included
- ✓ Parking: 54 Surface Spaces
- ✓ Highly Visible
- ✓ Signage: Corner of Holcomb Bridge & Warsaw Road
- ✓ Excellent Roswell Amenities, Perfect for Expanding Companies



**Richard Bowers & Co.**  
260 Peachtree Street | Suite 2400  
Atlanta, GA 30303  
(404) 816-1600  
www.richardbowers.com



For More Information contact:

**Jeff McMullen, VP**  
o) 404- 816-1600 Ext. 145  
m) 770-380-6538  
jmcullen@richardbowers.com

**Dave Morgan, VP**  
o) 404- 816-1600 ext. 119  
m) 404-310-7643  
dmorgan@richardbowers.com

# OFFICE FOR LEASE

2<sup>ND</sup> Floor

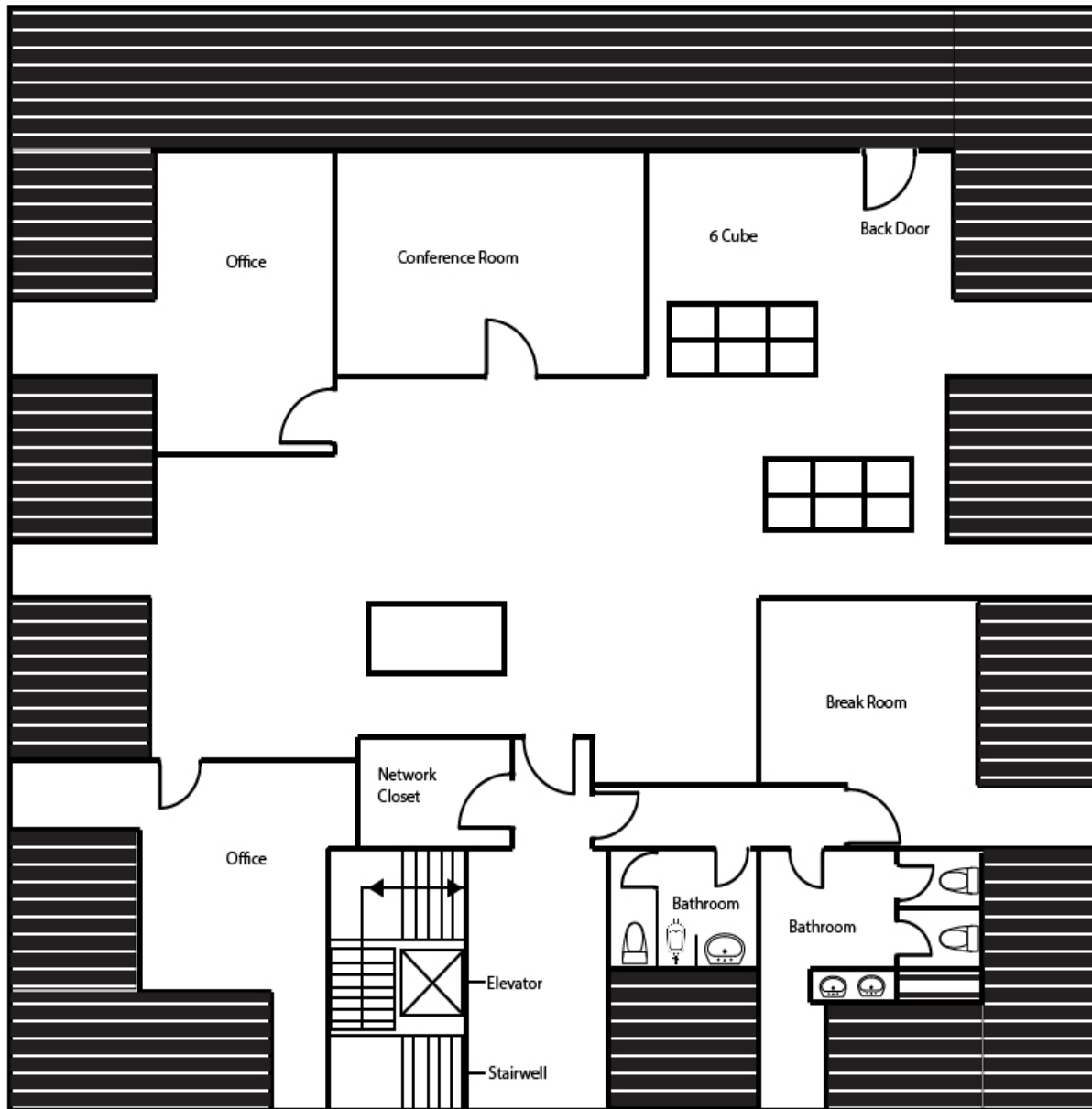
±2,500 SF

# 910 Holcomb Road

Roswell, GA 30076

## FLOOR PLAN

±2,500 sf



### LEGEND



- Roofing



**Richard Bowers & Co.**  
260 Peachtree Street | Suite 2400  
Atlanta, GA 30303  
(404) 816-1600  
[www.richardbowers.com](http://www.richardbowers.com)



### For More Information contact:

**Jeff McMullen, VP**  
o) 404- 816-1600 Ext. 145  
m) 770-380-6538  
[jmcmullen@richardbowers.com](mailto:jmcmullen@richardbowers.com)

**Dave Morgan, VP**  
o) 404- 816-1600 ext. 119  
m) 404-310-7643  
[dmorgan@richardbowers.com](mailto:dmorgan@richardbowers.com)