

47 Gramling St.

Marietta, GA 30008

3,000 – 6,000 SF AVAILABLE

 **FAMILY EYE CARE**
Optique

47



PROPERTY HIGHLIGHTS

- ✓ 3,000 – 6,000 SF Available
- ✓ New construction with uncompromising style & quality
- ✓ 39,977 traffic count
- ✓ Signage available

\$23.00/SF + Utilities

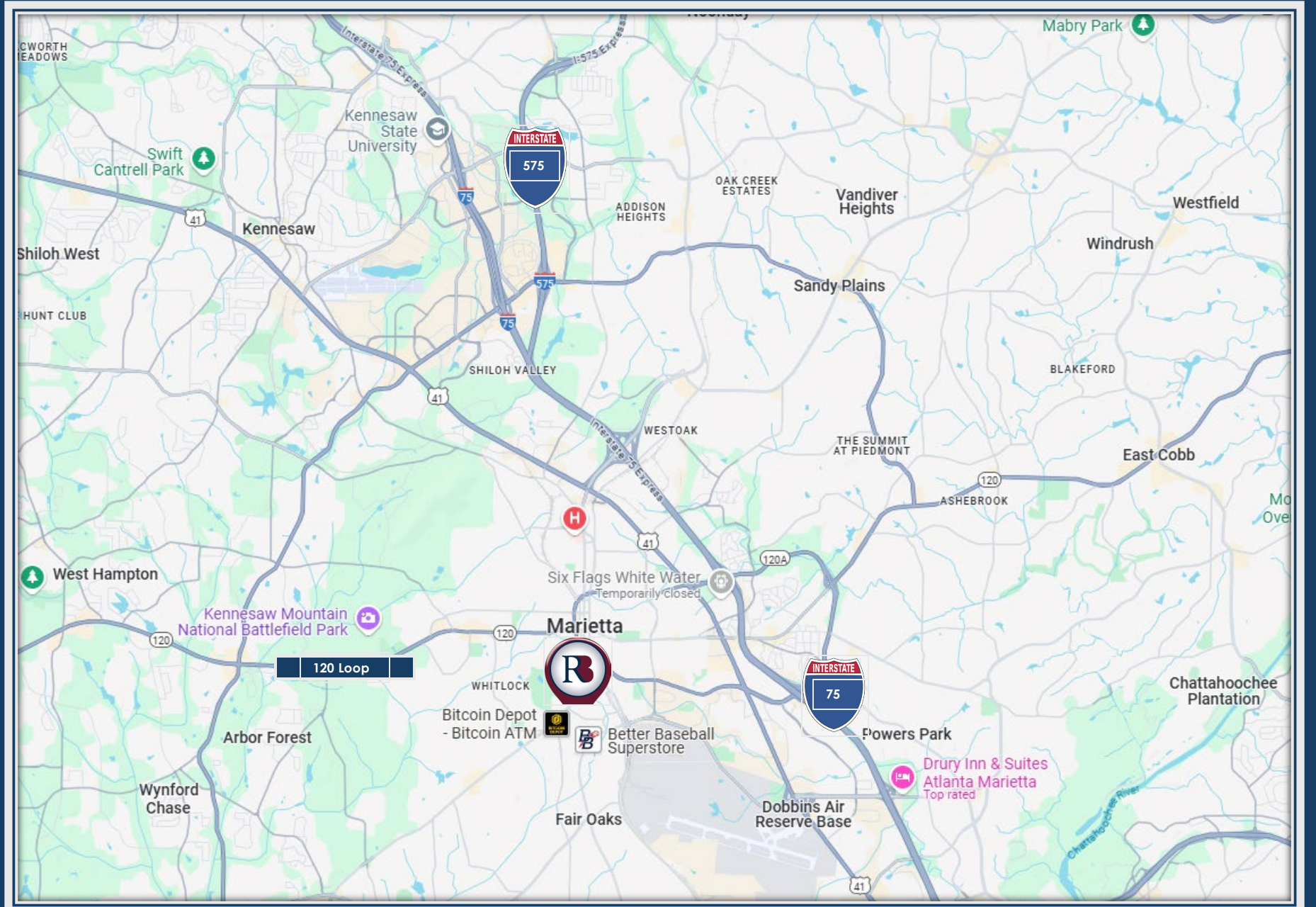


Location Advantages

- ✓ Easy access to interstate and all that Metro Atlanta has to offer
- ✓ Close proximity to Charming Marietta Square
- ✓ Great visibility and corner property on main thoroughfare



Map



Interior & Exterior Pictures



Nearby Restaurants

- ✓ Marietta Melt Yard
- ✓ Hamp & Harry's
- ✓ Kiosco Marietta Square
- ✓ Willie Rae's Social House
- ✓ Taqueria Tsunami
- ✓ Casita Mexican Kitchen
- ✓ Todo Frito Marietta
- ✓ Chick'n Wok
- ✓ The Bowl
- ✓ Marietta Burger Bar



*Interior picture of Hamp & Harry's on-site restaurant

For More Information contact:

Ash Parker
(770) 337-3481 - Mobile
(404) 816-1600 ext. 124 - Office
aparker@richardbowers.com